

interior designer

BRITAIN'S OLDEST MAGAZINE FOR PROFESSIONAL INTERIOR DESIGNERS

£3.95 NOVEMBER 2021



KEUCO

Precise, linear angles
EDITION 90 SQUARE by KEUCO

STUDIO INDIGO COMPLETES KINGS COURT OFFICE

In the heart of Fitzrovia, Studio Indigo has designed a funky new office. This bijou office space of only 2,600 sq. ft. is on the top floor of an existing Edwardian office building. The brief was to create a bright and colourful work environment and gallery for the Client's contemporary art collection. The exposed mechanical services and the external terrace with fabulous view over this part of London were redeeming features. This, together with the client's passion for art and the local galleries became the key ingredients for the design of the new offices. A Soho loft vibe celebrating the

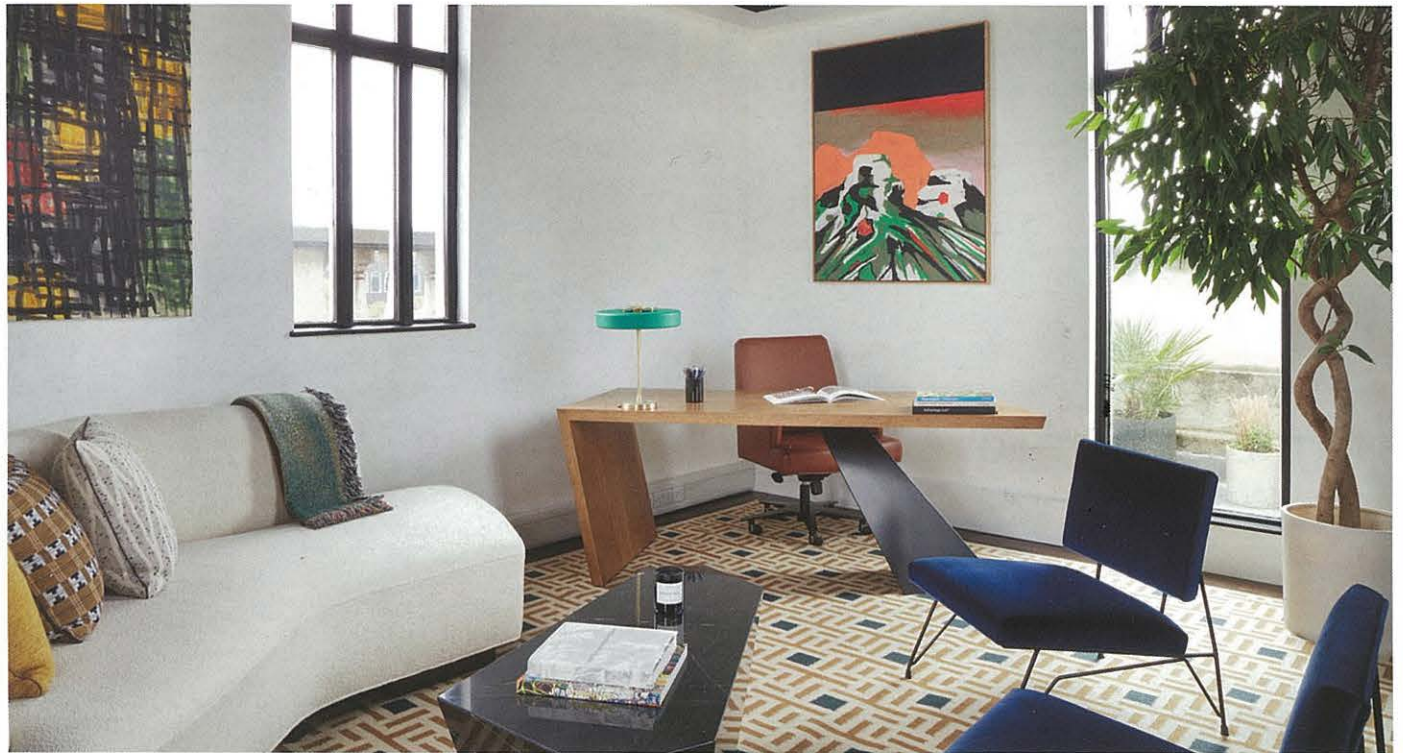
industrial chic of the building services has been combined with the vibrant and colourful art collection which is also reflected in the choice of furniture and fabrics.

Studio Indigo created various break out areas, boardroom and office spaces including a library and a stylish kitchen, all divided by contemporary glass partitions. These were made out of ribbed glass, providing privacy whilst allowing light to pass through. In the main boardroom, a new bespoke joinery wall contains storage and shelving that also hides the functional office supplies and printing services. You

ascend, via a concealed staircase, to the executive office which truly aims to wow with its domed ceiling and a beautiful array of bold colours and artwork. Facing an open terrace overlooking the London skyline, the executive office has been designed to be welcoming and yet have a wow factor. The result is a contemporary office that surpasses expectations without feeling rigid or corporate. A true reflection of the cool, laid-back and yet ambitious ethos of those who work there.

@studioindigold

Photography courtesy of @lukewhitephotography



FETTLE UNVEILS DESIGN FOR SCHWAN LOCKE MUNICH

Fettle has completed work on the design of Schwan Locke, a new 151 room aparthotel in the Theresienwiese area of Munich, Germany. Fettle's scope of design covers the guest apartments, three suites, the lobby and coffee shop as well as the guest lounge, bar, courtyard and the gym. Fettle's brief for Schwan Locke, the first Locke property in Germany, was to create a space for locals and travellers alike that is grounded in its location within Munich. For the overall design Fettle has drawn inspiration from the Deutscher Werkbund movement that started in Munich in the early 20th century. The Werkbund's aim was to combine mass production with traditional craft to make objects that were functional, feature little ornamentation but were also aesthetically pleasing and available to the masses. The spaces that Fettle has created pay homage to these principals, whilst ensuring that these are also integrated into the existing aesthetic of the Locke brand, the hotel's location and the modern world. The result is an interpretation of modernist principals rather than a pastiche of this iconic style, which is reflected throughout the hotel design and can be seen in the joinery details of the cafe

counter and feature bar in the ground floor lounge as well as many of the furniture and lighting pieces. The artwork throughout the hotel draws inspiration from the pioneering women involved in the Werkbund movement – from photographer and sculptor Marianne Brandt to Lilly Reich who was on the board of directors. Local artist Veronika

Grenzbach has reimagined their portraits in a feminine way using a vibrant colour palette. These unique portraits can be seen throughout the public spaces and guestrooms.

www.fettle-design.co.uk

Photography by Edmund Dabney

