

Livingetc

THE HOMES MAGAZINE FOR MODERN LIVING

NOVEMBER 2013 £3.99 US \$9.50/AUS \$9.95

Modern SPACES

Inspiring homes packed with ideas to steal

TAILORED TO PERFECTION

Decorating looks dressed to thrill



STATEMENT BATHROOM
Design a stunning bathing retreat

BAROQUE 'N' ROLL
EDGY IDEAS FOR GRAND SCHEMES



BRIGHT LIGHTS
Shop for the latest lamps, pendants and knockout chandeliers

PLUS
The best sofas, rugs and range cookers

Easy luxury



Home profile

THE OWNERS Cassie Reid, a jewellery designer, her husband Stuart, who works in the City, their sons Charlie, 21, and Harry, 17, plus Dillon, the Parson Russell Terrier.

THE PROPERTY

A five-storey Georgian townhouse in south London. On the lower-ground floor, there's a kitchen with a walk-in larder, family room, WC, utility area and wine cellar. One flight above, there's a study, dining room and WC. On the first floor is a drawing room and guest bedroom with en suite, while the master suite is on the second floor. The top floor has the boys' bedrooms, plus a shower room and access to a roof terrace.

HOUSE of the MONTH

Lucre RELOADED

Cassie and Stuart's Georgian home is a haven of all things polished, silken, curvaceous and cool, drawn together in the line of beauty

Words - Jo Leavers
Photography - James Merrell
Styling - Mary Weaver

DRAWING ROOM

'This room is really all about my style,' says Cassie. Her relaxed attitude to décor is all about blending beautiful textures for an easy-going opulence.

GET THE LOOK The sofa is by SCP. The Gibson armchair is by Designers Guild. The Rabbit table lamp by Front for Mool is from Twentytwentyone. The walls are painted in Paint Library's Blue Blood emulsion. The rug is from Bazaar Velvet. The flowers throughout are from Wild About.

← **HALLWAY**

'We liked the idea of a traditional-shaped chandelier, but then this one surprises you with its metal and mud beads,' says Cassie. Polished plaster walls in the stairwell and hall are a perfectly modulated backdrop for modern British artwork.

GET THE LOOK The Mud Beaded chandelier is from Abigail Ahern, while the paintings at the foot of the stairs are by, from left, William Gear and Claude Venard. Find a similar stair runner at Roger Oates. The rug is from Bazaar Velvet.



Luxury

isn't defined by a label, it's about discovering something that strikes a chord with you, that gives you pleasure,' says Cassie Reid. 'To enjoy it, you can't have a "don't touch" mind-set.' Right on cue, Dillon the dog, fresh from his walk, jumps up on his owners' bed and flops on to the Niki Jones silk throw and Fornasetti cushions with a satisfied yawn.

'As I was saying...' laughs Cassie. She's endearingly laid-back about the luxe fabrics and design classics that grace the Georgian townhouse she shares with her husband Stuart, sons Charlie and Harry, plus, of course, Dillon. Yet her relaxed attitude to décor serves as a masterclass in how to blend beautiful textures for an easy-going opulence. Welcome to the sensual pleasure zone with a reassuringly homely side.

Back downstairs in the slate-grey kitchen, Harry is rattling about looking for his shoes, while an unfazed Cassie brews a punchy pot of coffee. 'I guess our approach is to seek out things that have been crafted with care – and have a beauty that will endure,' she says. For Cassie and Stuart, a thing of beauty can be something as simple as a Penguin first edition (check out the collection in Stuart's study), a Saarinen dining table or a work of art. Their most exciting find, however, has to be this entire Georgian townhouse, a once-neglected architectural gem now buffed to a sparkling shine.

'Ironically, we weren't looking for a project,' says Cassie, 'we wanted to just move in and unpack our pyjamas.' But when they saw the house's soaring proportions, those good intentions didn't stand a chance. Plan B swung into action: a top-to-toe renovation, under the guidance of architects Studio Indigo.

'We've restored the house to its Georgian classicism, but given it a contemporary edge,' says Cassie. The handsome exterior was simply enhanced, but the biggest transformation was inside. 'I love interiors and textiles, so for me, the next stage was very exciting. Stuart was less gripped by endless talk of cornices and skirtings.'

On all five floors, rich surfaces rule: oak flooring radiates a

'If you decorate to a formula – without any surprises – it doesn't say anything about you, so I just go by what works for me'

subtle tone, silken-grey polished plaster is wrapped around the curved walls and authentic shutters let light flood in (Cassie hates the clutter of curtains). Texture comes in the shape of velvet-soft rugs shot with gold, modern British artwork – 'Grey is an amazing backdrop for colour' – and the sheen of marble and mirror. It's an intoxicating mix.

But Cassie and Stuart's approach ensures that the luxe is tempered by down-to-earth humour. So in the dining room, Abigail Ahern's Porcelain chandelier casts a glow over a bespoke table and set of Wishbone chairs... plus Cassie's shopping bike. Similarly, Stuart's study gets serious with an acid-etched steel desk and Bauhaus lamp, but then check out the painting above the fireplace: 'I like the idea that you expect a Stubbs – but here you get a fantastic portrait of a robot,' adds Stuart.

Remixing old with new is also reflected in Cassie's work as a jewellery designer. 'I seek out antique and vintage objects and rework them into contemporary keepsakes,' she says. So items such as a silver dance-card pencil or Twenties swizzle stick are reborn as wearable, quirky necklaces with a story.

'If you decorate to a formula – without any surprises – it doesn't say anything about you,' Cassie reflects. 'I just go by what works for me. Others might hate it, but sometimes the wild card is the one to go with.'

We reckon Cassie's just raised the stakes...

See Cassie's jewellery at fribblepistol.co.uk. Learn more about Studio Indigo's work at studioindigo.co.uk

GET THE LOOK The console table in the hallway was sourced by Albrissi Interiors. For similar glassware and ceramics, try Contemporary Applied Arts.

DRAWING ROOM

Having spotted the photographer moving into the living area, Dillon the dog prepares for his close-up with Charlie.

GET THE LOOK The skull painting is by Damien Hirst. Other Criteria sells prints of Hirst's work. This is the 85 Lamps pendant by Rudy Graumans for Droog at Twentytwentyone. The mother-of-pearl chest is by Graham & Green. For a lacquer console table, try Orchid.





DINING ROOM ↑ →

'Just before the decorator was about to paint the wall, he turned to me and asked, "Are you sure about this?" Now, everyone loves the shade. It's modern, but true to Georgian style,' says Cassie.

GET THE LOOK The walls are painted in Farrow & Ball's Pelt estate emulsion. This is the Porcelain Chandelier by Abigail Ahern. The CH24 Wishbone chairs by Hans Wegner for Carl Hansen are available from The Conran Shop, which also supplied the mirror above the Chesney's fireplace. The rug is from Bazaar Velvet. The bespoke dining table is by Decorus Furniture. The bowl is by Thomas Bohle. The jewellery is from Cassie's new range Fribble Pistol.



KITCHEN ↑

'We all congregate around this space, but I'm afraid I'm not one of those women who gushes about cooking. I hate it!' admits Cassie.

GET THE LOOK The cabinetry is by Studio Indigo. For a similar, Shaker-style painted kitchen, try Roundhouse. The wooden Imo bar stools are by Russell Pinch for Pinch, available from The Conran Shop.

Home truths

DESERT ISLAND LUXURY?

Dillon the Dog.

WHAT IS THE BEST THING

ABOUT LIVING WITH

TEENAGERS? Their energy.

...AND THE WORST?

Dampening their energy!

WHAT IS YOUR SECRET

INDULGENCE? A bag of

Revels and flea markets

(not necessarily at the

same time).

WHAT WAS THE FIRST

DANCE AT YOUR

WEDDING? *Love Me*

Tender by Elvis Presley.

IF YOU HAD TO PREPARE

AN EMERGENCY MEAL

IN 10 MINUTES, WHAT

WOULD YOU MAKE?

Pasta with green pesto.

KITCHEN

The shape of the kitchen dining table echoes the curve of the house's rear wall and windows, a key feature of its Georgian architecture.

GET THE LOOK This is the *Eero Saarinen* dining table for Knoll, available at *The Conran Shop*. The chairs are vintage Danish. The *Eva* dining chair by John Lewis is similar. The range cooker is by Mercury. The units are painted in Little Greene's *Lead Colour* eggshell. The artwork is by *Prunella Clough*. To see more of her paintings, visit *Flowers Gallery*.



STUDY

The robot painting is a 're-rendering' by the artist of a larger scale one he'd just sold to a well-known internet magnate. 'He kindly offered to do me a "little brother" version,' says Stuart, 'which has just the right effect.'

GET THE LOOK The painting is by Stephen Skollar. Arcadia Fine Arts in New York sells his work. The antique ceiling light was found at Brownrigg. For an acid-etched steel desk like this, try Müller Möbel Fabrikation at Chaplins. The black desk lamp is the Kaiser Idell Luxus by Christian Dell for Fritz Hansen at The Conran Shop. This is the Primo easy chair and ottoman by Yngve Ekström for Swedese. The rug is by Rex Ray for Bazaar Velvet.



**MASTER
BEDROOM**

Stuart's collection of early black-and-white photographs fits in perfectly with Cassie's choice of a cool, monochrome scheme.

GET THE LOOK This is the Platner coffee table by Warren Platner for Knoll. The Grecian key patterned rug is from Bazaar Velvet. Find a similar floor lamp at Sigmar.

'I used a repeating motif to subtly unite elements throughout the house – for example, this Grecian key can also be found in the stair runner'





MASTER EN SUITE ↑

Double-sided bathroom mirrors and a marble-clad chest of drawers separate the wet area from a dressing-room zone.

GET THE LOOK The marble chest of drawers is a bespoke design by Studio Indigo. Large-format floor tiles can be found at World's End Tiles.

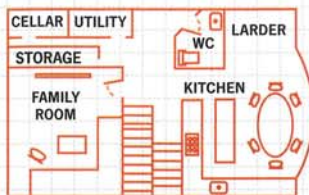
MASTER BEDROOM

'I have a thing about Fornasetti, so I wanted the bedroom to be virtually all black and white in homage to him. Set against white walls that could look harsh, but grey makes it easier on the eye,' Cassie explains.

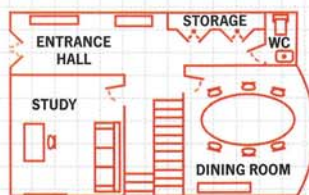
GET THE LOOK The bed is from Savoir Beds, dressed with cushions from The Conran Shop, Designers Guild and Fornasetti. The bedside table is from De Parma. The gold bedside light is the w102 by David Chipperfield for Westberg, available at Haus London.



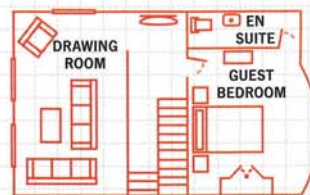
The blueprint



LOWER-GROUND FLOOR



GROUND FLOOR



FIRST FLOOR



SECOND FLOOR

MASTER EN SUITE

A freestanding tub takes pride of place in front of the fire. Flanked by his-and-hers basins, there's plenty of room for the couple to prepare for a new day.

'We never squabble about who left the top off the toothpaste!' laughs Cassie.

GET THE LOOK The bath and basins are by CP Hart. The walk-in shower, marble and flooring were all sourced by architects Studio Indigo. The artwork above the fireplace is by Claude Venard. His paintings are available to buy at 1stdibs.com.

Livingetc loves

THE DEEP PAlettes OF GREY, purple and blue – they tick the modern luxe boxes, but also echo Georgian paint shades.

THE WAY A CLASSIC GREEK KEY MOTIF IS REPEATED on the dining room mirror and rugs, subtly uniting areas without being matchy-matchy.

THE DECADENT EXPANSES OF MARBLE in the master en suite – they almost look like abstract artwork in their own right.

THE TOUCHES OF GLAM From the amazing statement chandeliers to the bathroom fit for a movie star.

HOW HANDCRAFTED GEMS FROM THE PAST, such as mother-of-pearl inlay, can be reworked as modern embellishments.



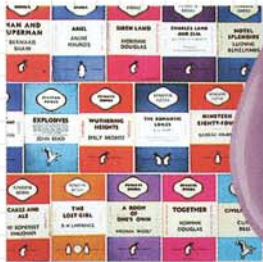
Download your digital edition today: visit housetohome.co.uk/digital-editions/livingetc



IDEAS toSTEAL

Repeating patterns and eye-catching objects sharpen up a monochrome look

KEY SURFACES



FROM LEFT: Penguin Library wallpaper, £65 per 10m roll, Osborne & Little. Dream Boat matt emulsion, £26.99 for 2.5l, Crown. Colourless Tiger's Eye engineered rustic oak flooring, £168 per sq m, Walking on Wood



KEY FEATURE Window shutters

The use of shutters has a long history (the Ancient Greeks made theirs out of marble!), but the design's revival in recent times is down to the same enduring factors – light control, ventilation, privacy and security. Nowadays, aesthetics are equally important. 'Shutters are a fantastic way of adding kerb appeal to your home,' says Chrissie Harper of the specialist company The California Company (thecaliforniacompany.co.uk). Expect to pay from £200 per sq m for similar curved shutters.

KEY PRODUCTS



1



2



3



4



5

1 Prussian wool rug (W170 x L270cm), £900, Bluebellgray at John Lewis
2 Wooden Pearl chandelier, £535, Abigail Ahern
3 Steel coffee table in Antique Copper finish, £255, French Connection Home
4 Emilia button-upholstered wood bed, from £1,575, And So To Bed
5 Mid-century West German ceramic vase, £32, A Rum Fellow
6 Greek Key baby alpaca throw, £295, Jonathan Adler
7 Massari acrylic bath, £369 (fixtures not included), bathrooms.com



6



7